

# COST-EFFECTIVE N/S SILL RESTORATION WITH EXPERT FABRICATION

HIGH-QUALITY RESTORATION, BUDGET-FRIENDLY SOLUTIONS



## CLIENT ISSUE

A customer approached us with multiple areas of damage to their vehicle, but they were particularly concerned about the N/S sill, which a previous service provider had poorly repaired. Upon closer inspection, we discovered full-length damage to the sill.

**The previous repair involved filling extensive damage and holes, a temporary solution that didn't address the underlying issues.**

The problem with the previous repair was the unavailability of replacement sill panels individually. To replace the sills, the entire front door aperture and rear quarter panel, which included the sills, needed to be replaced. These panels are expensive, so the previous repairer opted for a cheaper but ineffective solution, covering the damage with filler.

The previous repairer likely determined that the combined cost of the required panels and fitting would exceed the vehicle's economic repair value, and probably concluded that the cost of the required new panels, plus fitting, would render the value beyond economical repair.

## THE SOLUTION

We prioritise providing both high-quality and cost-effective solutions. After assessing the vehicle, our technicians removed the old filler and exposed the full extent of the damage to the original panel. While replacing the front door aperture and rear quarter panel would have been the typical route, we opted for a more economical approach without compromising on quality.



## THE REPAIR PROCESS

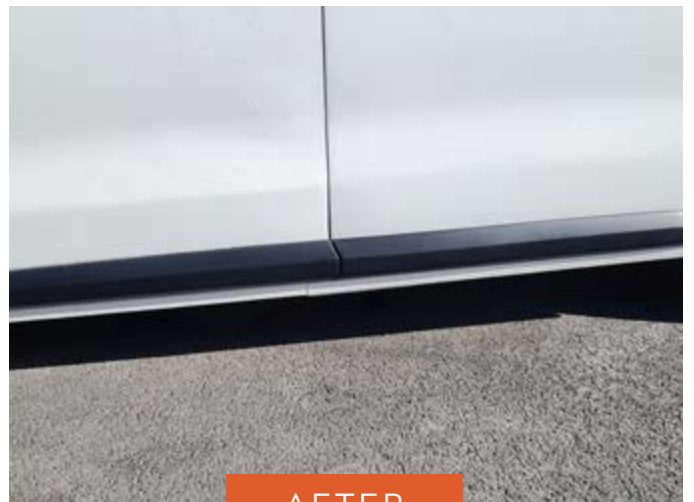
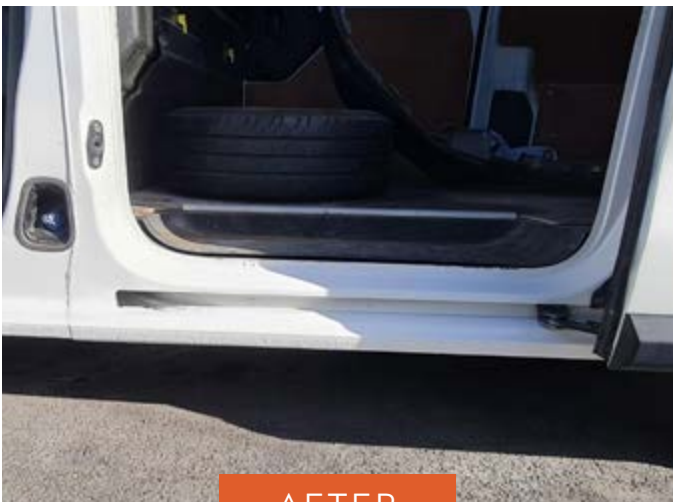
- 1. Damage Evaluation:** After identifying the extensive damage to the sill, we decided to cut out the damaged section of the sill, which spanned the full length.
- 2. Fabrication:** Using our in-house fabrication, equipment and skills, we crafted new sill panels that fit perfectly, replacing only the damaged section. This approach saved our customer significant off road time (hidden cost) and costs compared to replacing the entire panels.
- 3. Other Repairs:** We then completed the necessary repairs to other parts of the vehicle, restoring it to its original condition.
- 4. Finishing Touches:** Once all repairs were completed, we refinished the repair areas, ensuring the vehicle looked as good as new.

## IMPLEMENTATION

This process took just one week to complete and was carried out at a fraction of the cost of replacing full panels. The customer was thrilled with the outcome, as they avoided a costly repair while ensuring the vehicle was fully restored.



**The N/S sill was poorly repaired, with filler covering extensive damage**



**The damaged sill was carefully removed and replaced with new fabricated panels, restoring the vehicle at a much lower cost**

## THE CONCLUSION

We pride ourselves on delivering exceptional results without breaking the budget. By using our fabrication, equipment and skills and taking a strategic approach, we helped the customer save money while ensuring their vehicle was repaired to the highest standard.

## A FAMILY RUN BUSINESS

We are an independent, family-run and family-owned commercial bodyshop business, proud to offer a comprehensive range of services through a single point of contact:

- Mobile Bodyshop Service.
- Commercial Bodyshop.
- Commercial Panel Painting.



## GET IN TOUCH

🌐 [www.budgetmobilebodyshop.co.uk](http://www.budgetmobilebodyshop.co.uk)

✉ [info@budgetmobilebodyshop.co.uk](mailto:info@budgetmobilebodyshop.co.uk)

☎ 01623 206827